

Assembly Instruction Sheet #IS-1178P44

For Style 1178P44

Tools Required: Flathead screwdriver, Phillips screwdriver, pliers, wire cutters, wire strippers, electrical tape, safety glasses.

Light Source: (20) G9 Candelabra Base Bulbs 40W Maximum(Not Include).

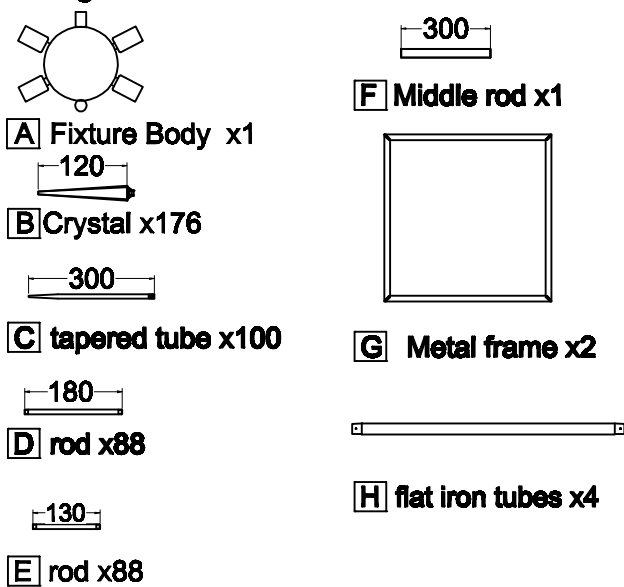
Estimated Assembly Time: 20-30 minutes

Preparation: Identify and inspect all parts before beginning installation. Check package content list and diagrams below to be sure all parts are present. If any parts are missing or damaged, do not attempt to assemble, install, or operate the fixture. Contact customer service for replacement parts.

⚠ Warnings and Cautions

Turn off electricity at circuit breaker or main fuse box before installation. Consult a licensed electrician if in doubt. These instructions are provided for your safety. It is very important you read them completely before installing the fixture. We strongly recommend that a licensed, professional electrician perform the installation. Disconnect fixture from power source before replacing bulbs. Make sure bulbs are given sufficient time to cool before removal.

Package Contents



STEP 1 -Install Crystal to Rod.

A. Twist the rod (D) and the rod (E) into the Crystals' thread.

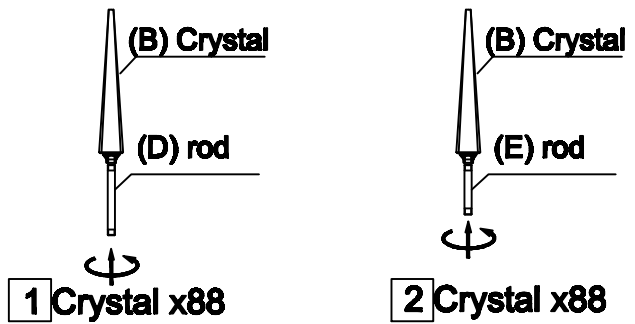


Figure 1

STEP 3 -Install Metal frame to Fixture Body.

A. Install one section of the Middle rod on the Fixture Body and the other end on the Quick Connector.

B. Refer to page 3 for cage assembly.

C. Install the lamp holder in Metal frame

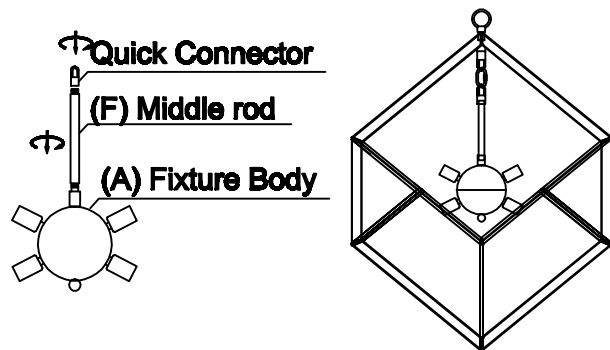


Figure 3

Hardware Contents

PART	DESCRIPTION	QUANTITY
AA	Canopy Lock Ring	1pcs
BB	Wire nut	3pcs
CC	Canopy Chain Loop	1pcs
DD	Crossbar	1pcs
EE	Outlet Box Screw	2pcs

